



MOMENTUM 2

USER GUIDE



TABLE OF CONTENTS:

PAGE NUMBER – PAGE DESCRIPTION

3.	Machine Features
4.	Assembly Instructions
	• (4) Winder Support Stand
	• (6) Turn Table
	• (7) Support Posts
	• (8) Drop Weight
	• (9) Tension Bar Stop Screw
10.	Mounting Racquets
	• (10) Racquet Support Adaptors
	• (11) Frame Support Posts
	• (12) Securing Racquets
13.	Stringing Your Racquet
	• (13) Setting Tension
	• (16) Clamping the First Main String
	• (17) Pulling Tension
	• (19) Clamping
	• (20) Cross Strings
	• (21) Finishing
22.	Additional Features
	• Storage and Tool Tray
	• Wayfinding Decals
23.	Maintenance and Adjustments
	• (23) Clamps
	• (24) Troubleshooting
	• (24) Care and Cleaning
25.	List of Parts
26.	Tools and Accessories
27.	Diagram of Parts

LIMITED LIFETIME WARRANTY: GAMMA Sports (GAMMA) warrants to the original purchaser that the GAMMA Momentum 2 stringing machine ("EQUIPMENT") purchased is free from defects in materials and workmanship for life of the EQUIPMENT. Should any defects develop under normal use, GAMMA will at its option, repair or replace the defective EQUIPMENT provided it is returned to GAMMA prepaid at the purchaser's expense. This warranty does not apply to any damage or defect caused by negligence, abuse, misuse, unauthorized alteration, shipping, handling, or part wear and tear as a result of normal use. Routine maintenance, adjustment, and cleaning required to ensure proper operation are the responsibility of the purchaser and are not covered under the terms of this warranty. These include, but are not limited to: String Clamp adjustment, as described on page 4. GAMMA's obligation under this warranty is limited to repair or replacement of defective EQUIPMENT, and no one is authorized to promise any other liability. GAMMA shall in no event be liable for any incidental or consequential damages. To return defective EQUIPMENT, a return authorization (RA#) must be obtained from a GAMMA customer service representative by calling 800-333-0337. The RA# must be marked on the outside of the shipping carton being returned. All returns must be shipped prepaid by the customer to GAMMA. Please retain the original shipping carton and packing materials for any future shipments. GAMMA will not be responsible for machines which are not sent in the original undamaged packaging.



FEATURES:

1. Drop Weight Tensioner with 9 to 90 lbs Tension Range
2. Permanently Engraved Weight Scale
3. Patented Parallel Jaw Rotating Ratchet Gripper with Diamond Dust Coated Gripping Surfaces
4. Two Point Racquet Mounting System- Accommodates All Racquets
5. Two Advanced Composite Floating Clamps with Thumb Screw Adjustment
6. High Strength Die Cast Aluminum Base with Durable Painted Finish and Convenient Tool Tray
7. Unique Way finding sticker decal and labeling system for ease of use

100% Human Customer Support:

Toll-free at (800) 333-0337 Ext. 224 • ewan.melanfant@gammasports.com

ASSEMBLY INSTRUCTIONS

A. WINDER SUPPORT STAND INSTALLATION

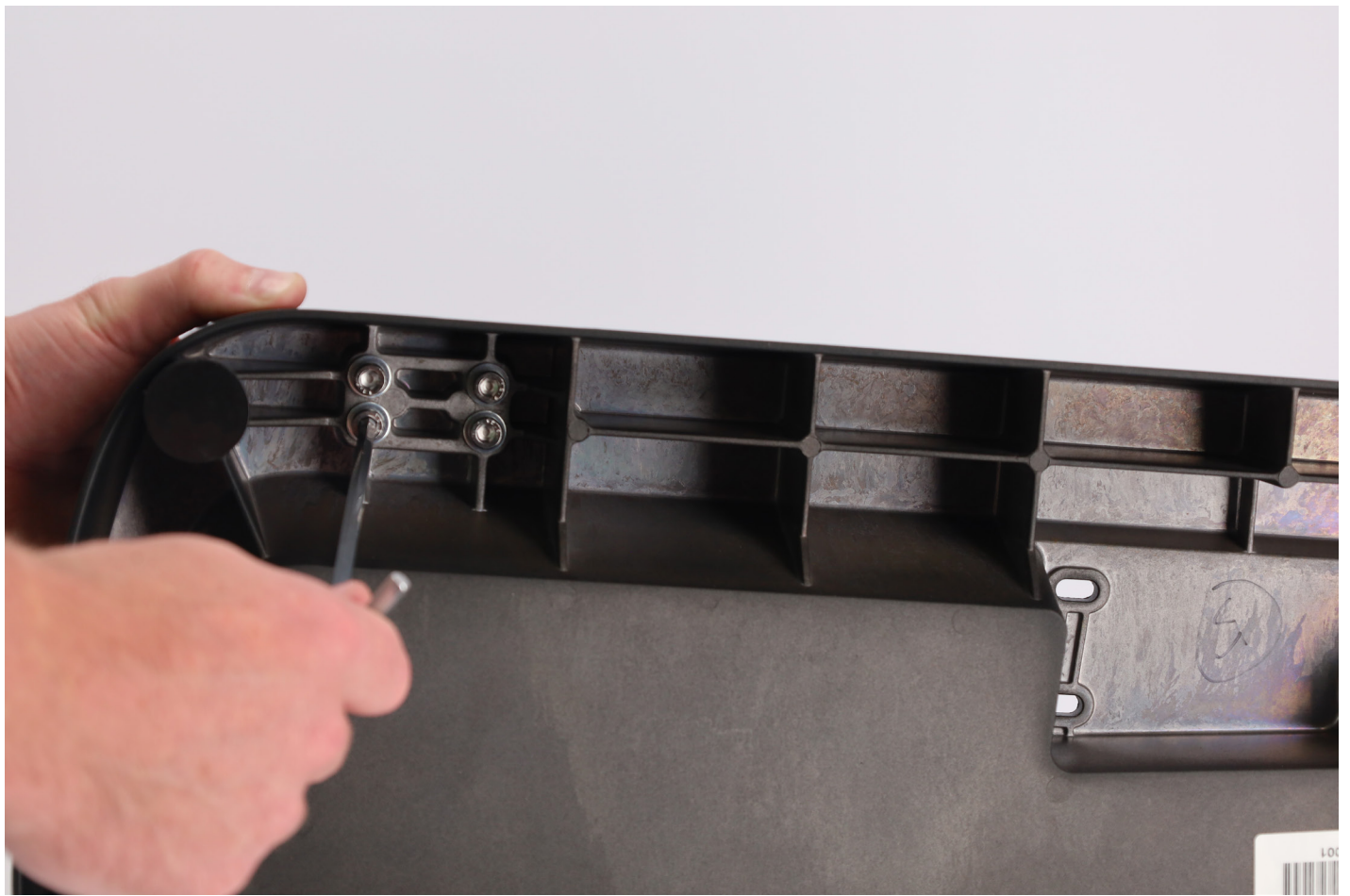
STEP 1

Locate the 4 holes to attach the winder stand and align the winder stand and attachment plate with the holes.



STEP 2

With the machine base on it's side, hold the winder stand in place while threading the 4 screws in from the bottom. Starting with the corners will make it easy to keep the winder stand and attachment plate aligned. After each screw is threaded, fully tighten each one to secure the winder stand.



B. INSTALLING THE TURN TABLE

STEP 1

Place the turntable ring spacer on the post of the turntable. Insert the turntable center post into the bushing assembly of the machine base.



C. INSTALLING SUPPORT POSTS

STEP 1

Slide each support post onto the end of the turntable bar. The posts should be oriented so that the spacer and pads for the racquet are closer to the center of the turntable.



D. INSTALLING THE DROP WEIGHT

STEP 1

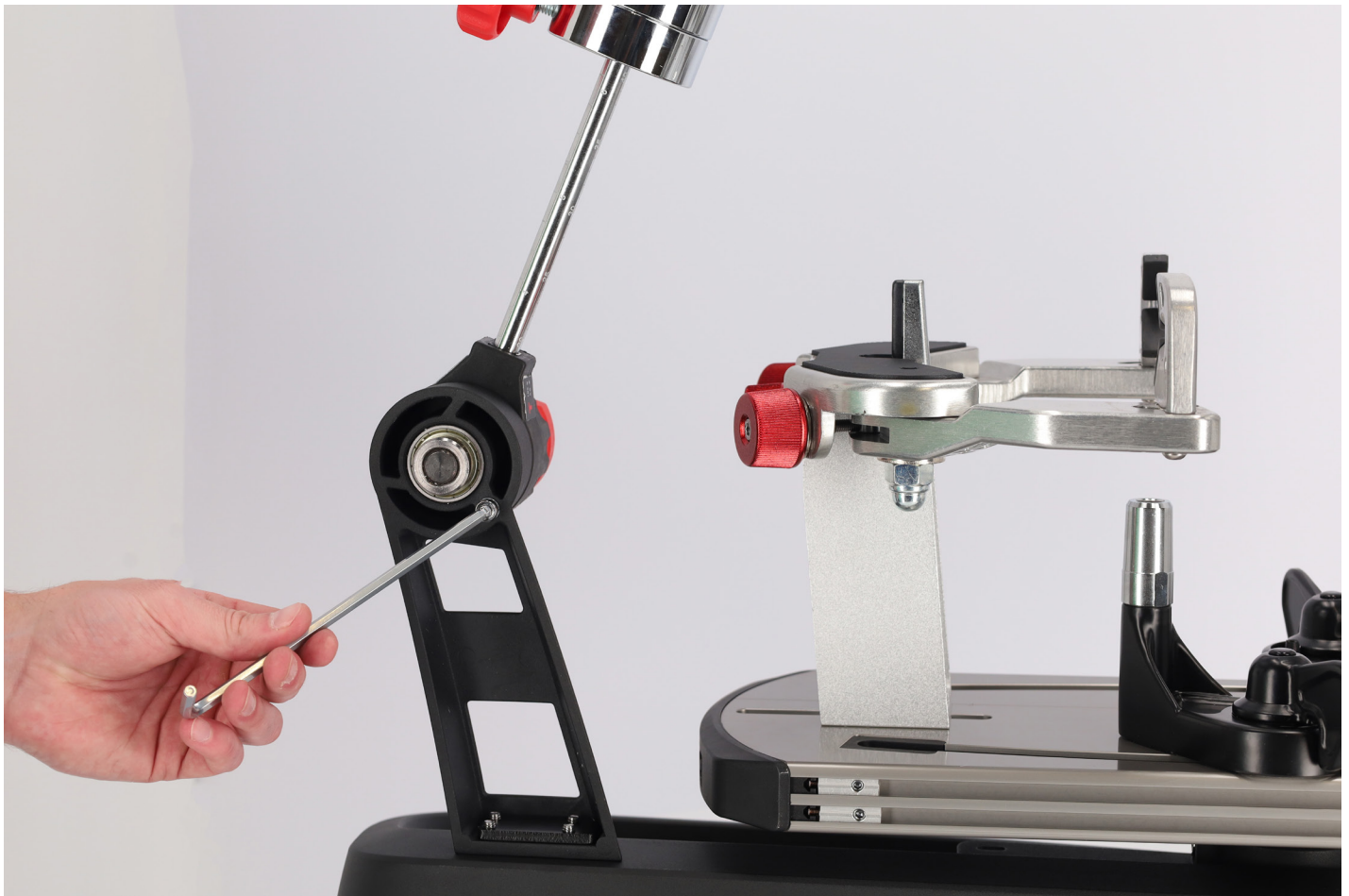
Remove the end cap from the tension bar and slide the drop weight onto the bar. The weight should be oriented with the knob end closest to the string winder. Replace the endcap.



E.TENSION BAR STOP SCREW

STEP 1

Raise the Tension Bar to an upright position. Using the supplied 5 mm wrench, securely tighten the Stop Screw. This will prevent the Tension bar from contacting the racquet frame.



YOUR ASSEMBLY IS NOW COMPLETE.

MOUNTING YOUR RACQUET

A. INSTALLING THE RACQUET SUPPORT ADAPTERS

The *GAMMA Momentum 2* is supplied with two styles of Racquet Support Adapters. A thick profile adapter for wide body racquets and a thin profile adapter for conventional racquet frames. The Adapters are also tapered, use the highest side of the adapter that does not interfere with the string grommet holes.



B. ADJUSTING THE FRAME SUPPORT POSTS

STEP 1

Place the racquet frame over the center posts and onto the frame support posts. Loosen the locking screws on one support post and slide the post in the appropriate direction until the plastic adapter contacts the frame. Securely tighten the locking screws. Adjust the opposite post in the same manner.

It is extremely important both plastic adapters are in contact with the frame to prevent racquet damage.



C. SECURING THE RACQUET

STEP 1

With the frame support posts properly adjusted, place the frame hold down plates over the center screws and tighten the clamp bar knobs securely.

Do not overtighten the knobs as frame damage may occur. Note: Inverted throat racquet frames may require the throat clamp plate to be rotated 180 degrees to match the frame.



STRINGING THE FRAME

A. SETTING TENSION

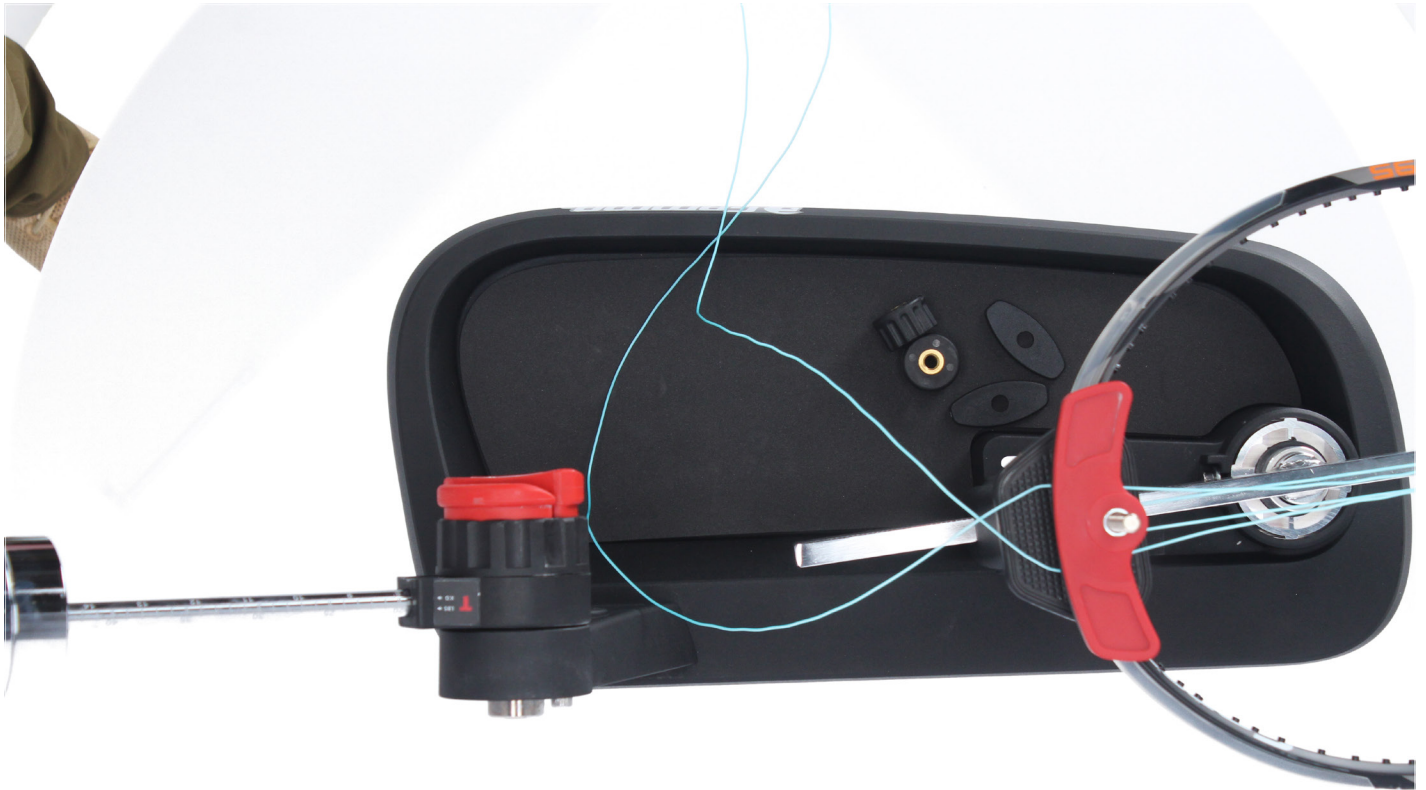
The drop weight is of a two-piece design. When assembled, it will accommodate tensions from 20 to 90 lbs. For tensions from 8 to 20 lbs., remove the 5mm bolt on the face of the drop weight, and use the smaller portion of the weight as described above.

Note: Tensions above 77lbs. require removal of the drop weight bar end cap.



STEP 2

The machine is equipped with stickers indicating the correct scales to use for stringing low and high tensions. Scales labeled for badminton should be used with the small portion of the weight.



STEP 3

To set the stringing tension, loosen the locking knob on the side of the drop weight. Slide the weight in the appropriate direction until the face closest to the string gripper is indexed with the desired tension mark on the tension bar. There is a sticker on the weight indicating the correct side to use.



B. CLAMPING THE FIRST MAIN STRING

STEP 1

Thread both ends of the main string through the 2 center main grommets. Pull both ends together to maintain even length on both sides and apply the floating clamp to both strings, leaving enough space for the second clamp to fit snugly against the frame.

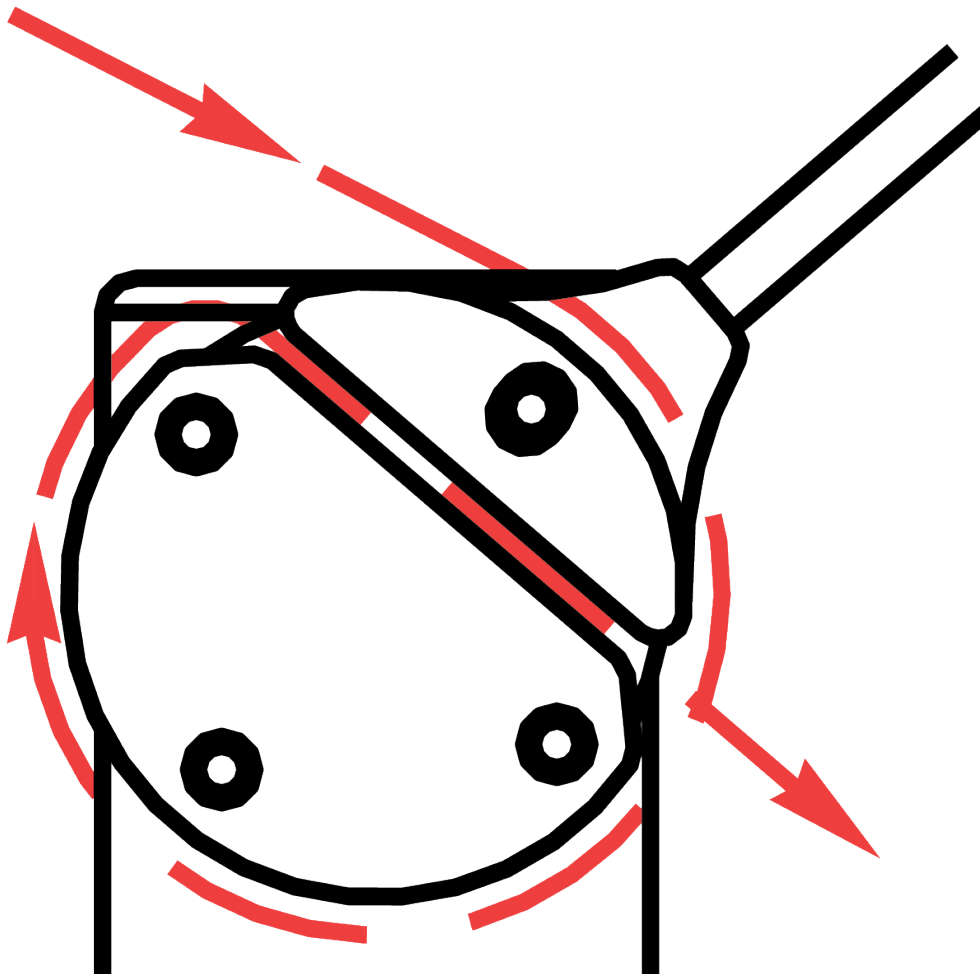


C. PULLING TENSION

STEP 1

Starting with the drop weight bar in the lowered position, wrap the free string clockwise around the gripper drum once and position between the gripper jaw. Gently turn the gripper clockwise while squeezing the jaws together until all slack in the string is removed.

Note: For proper operation, the string gripper jaw must be in the position shown. The tension in the string provides the clamping force to the jaws.



STEP 2

While holding the string gripper drum with your hand, lift the tension bar to approximately 45 degree angle and let fall. If the tension bar drops below horizontal, repeat the above action until the bar comes to rest parallel to the racquet. The set tension will be reached when the bar rests horizontal. If the bar comes to rest above horizontal, release the string and re-pull tension.

Manually forcing the bar into the horizontal position will greatly increase string tension and may result in racquet damage.

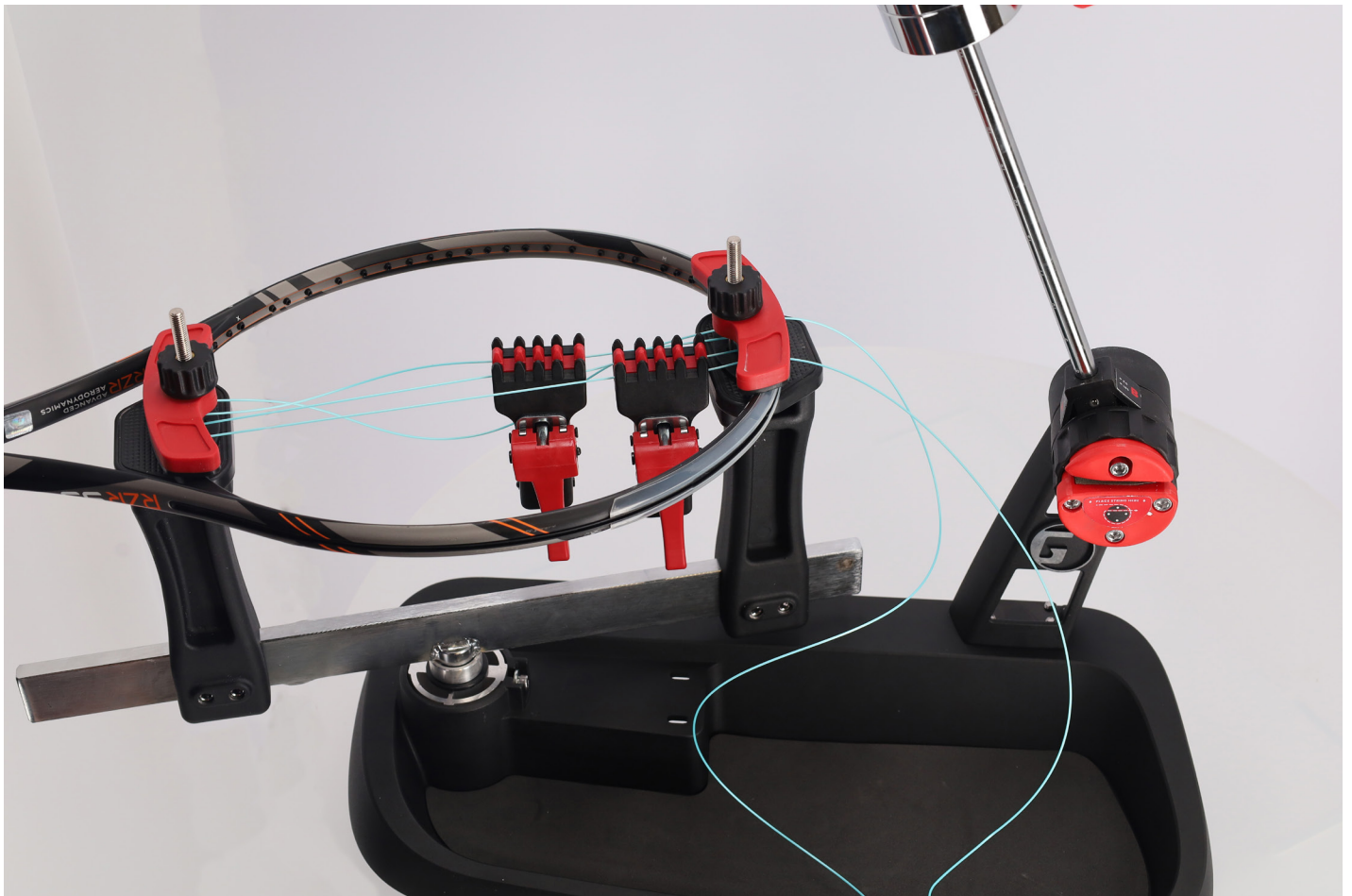


WARNING: TO AVOID INJURY, KEEP FINGERS AWAY FROM GRIPPER JAWS WHILE TENSIONING STRING.

D. CLAMPING THE STRING

STEP 1

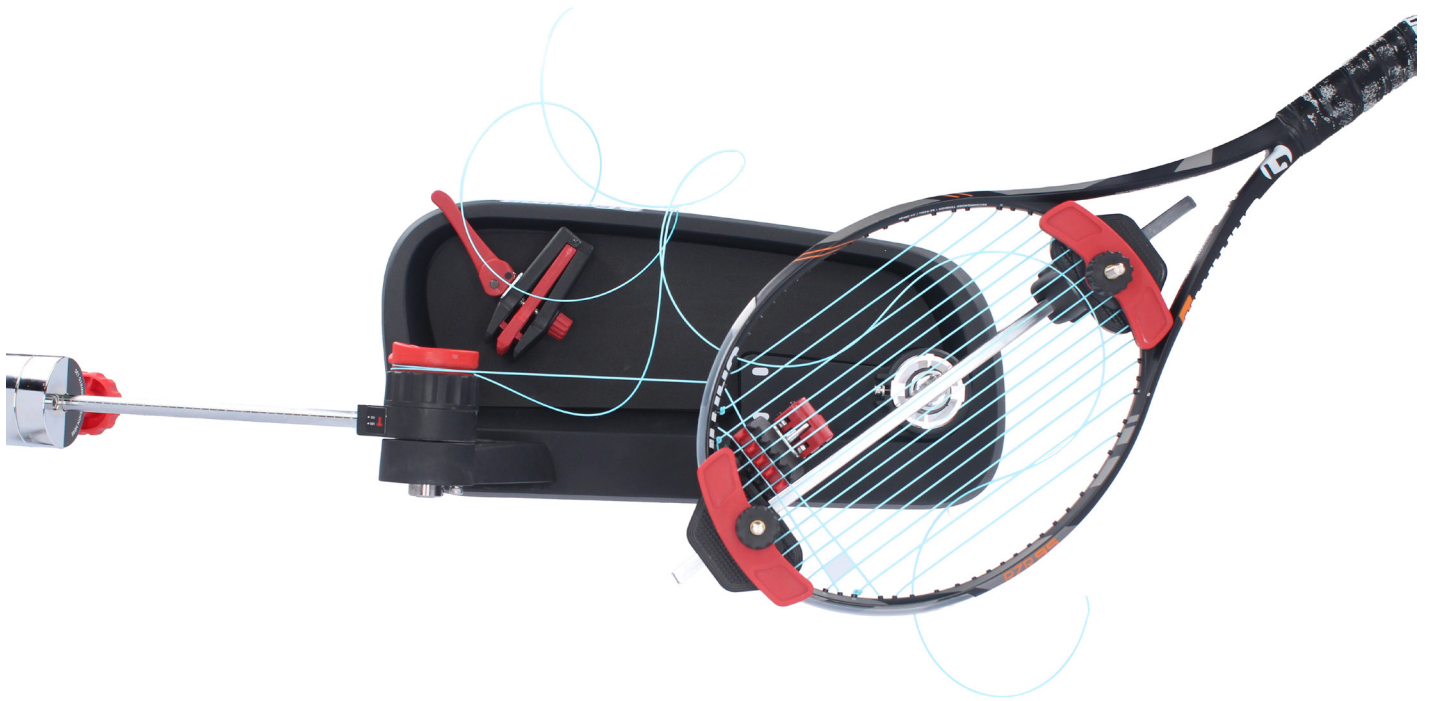
Clamp the tensioned string to the next adjacent string using the second string clamp. Release the tensioned string by raising the tension arm. Repeat the procedure for all of the remaining main strings and tie off following the racquet manufacturers recommendations.



E. STARTING THE CROSS STRINGS

STEP 1

Follow the manufacturer's recommended stringing pattern for one or two piece stringing. This will determine the starting point for the cross strings. Weave the first two cross strings and pull tension and clamp the cross strings to each other.



F. FINISHING THE STRING JOB

STEP 1

Weave and tension the remaining cross strings and tie off at the specified grommet hole. Remove the strung racquet from the *GAMMA Momentum 2* in the reverse order of mounting.

ADDITIONAL FEATURES

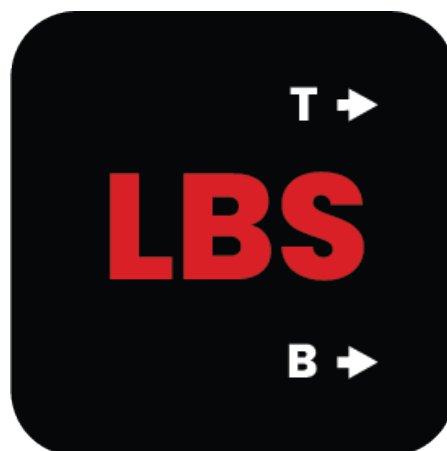
A. STORAGE AND TOOL TRAY

The machine base incorporates ample space to store tool and accessories for easy access during stringing, and for storage when the machine is not in use. A foam pad is included with the machine but not secured. Customers can choose to apply the pad or leave it free.



B. WAYFINDING DECALS

Decals help to guide the user through the stringing process, and weight scale labels help identify where to place the weight for different scenarios.



MAINTENANCE AND ADJUSTMENTS

A. CLAMP ADJUSTMENT

The floating clamps provided with your machine will need minor adjustments according to what string type, construction, and gauge you are using. If the strings slip through the jaws of the clamp, tighten the clamp by turning the thumb knob opposite of the handle, in the clockwise direction. If the clamps leave impressions or damage the string, they are too tight and the thumb wheel must be turned counterclockwise. The clamp jaws must be clean and free from dirt, oil, and any string coating for them to grip properly. Keep the clamp jaws clean with alcohol.



B. TROUBLE SHOOTING TIPS

PROBLEM: String slipping in clamp.

SOLUTION:

1. Adjust clamp jaw spacing.
2. Clean clamp jaws with alcohol or Gamma Cleaning Stone.

PROBLEM: String slipping in gripper.

SOLUTION:

1. Be sure to follow instructions for wrapping the string around the gripper.
2. Clean gripper jaws with alcohol or Gamma Cleaning Stone.

PROBLEM: String not releasing from gripper after pulling tension.

SOLUTION:

1. Remove tension bar stop screw for additional rotation freedom of the gripper.
2. To prevent this issue, start with the tension bar in the lowered position and use ratchet gripper for precise adjustments (this also helps achieve more consistent tension)

ADDITIONAL PROBLEMS?

100% Human Customer Support:

Toll-free at (800) 333-0337 Ext. 224 • ewan.melanfant@gammasports.com

C. CARE AND CLEANING

With time and use, the clamping surfaces of your machine may become oily or dirty and result in string or clamp slippage while stringing. Periodic cleaning of the String Clamps and String Gripper is recommended. Knife sharpening stones work well for cleaning the diamond coated string clamping surfaces. Cleaning with a solvent such as isopropyl alcohol and a mild abrasive tool such as a toothbrush also works well to remove oily or greasy build up.

PARTS LIST

PART NUMBER – PART DESCRIPTION

4A	TURNTABLE BUSHING
446	BUSHING SLEEVE
446A	BUSHING SLEEVE BOLT X2
9	Support Post SET SCREW x8
24	KNOB
25	TENSION BAR
25A	SET SCREW
26	TENSION BAR CAP
32	DROP WEIGHT KNOB
28	FRONT WEIGHT
29	BACK WEIGHT
30	TENSION BAR DRUM
30A	SET SCREW
31	STRING GRIPPER DRUM
34	RATCHET TEETH
35	RATCHET TEETH SPRING
46	FLOAT CLAMP HANDLE
47	FLOAT CLAMP KNOB
48	SWING BOLT
49	RETURN SPRING
50	Pivot Pin
51	RETAINING RING
78	CLAMP PLATE
79	CLAMP PLATE PAD
82	FRAME SUPPORT SHORT
82A	FRAME SUPPORT TALL
83A	TENSION BAR STOP SCREW
92	TURNTABLE
93A	SUPPORT POST
94	SUPPORT POST PIN
95	SUPPORT POST PAD
161	WINDER BEARING
162	GRIPPER PIVOT PIN
163	PIVOT PIN RETAINER COLLAR
440	DIE CAST BASE
5	RUBBER FOOT
441	DIE CAST WINDER STAND
442	WINDER STAND BRACKET
444	Winder stand bracket bolts x4
445	Tool Tray Pad

TOOLS AND ACCESSORIES LIST

PART NUMBER – TOOL DESCRIPTION

69	HEX WRENCH / 3 mm*
70	5 mm T- HEX WRENCH*
98	BOX WRENCH- 10 mm*
109	NEEDLE NOSE PLIERS*
229	HEX WRENCH / 5 mm*
315	TURNTABLE RAISER RING
MA	STRINGER'S AWL*
MRSG	ROTATIONAL GRIPPER
MPFC	FLOATING CLAMP
MPSA	MPSA PATHFINDER AWL*

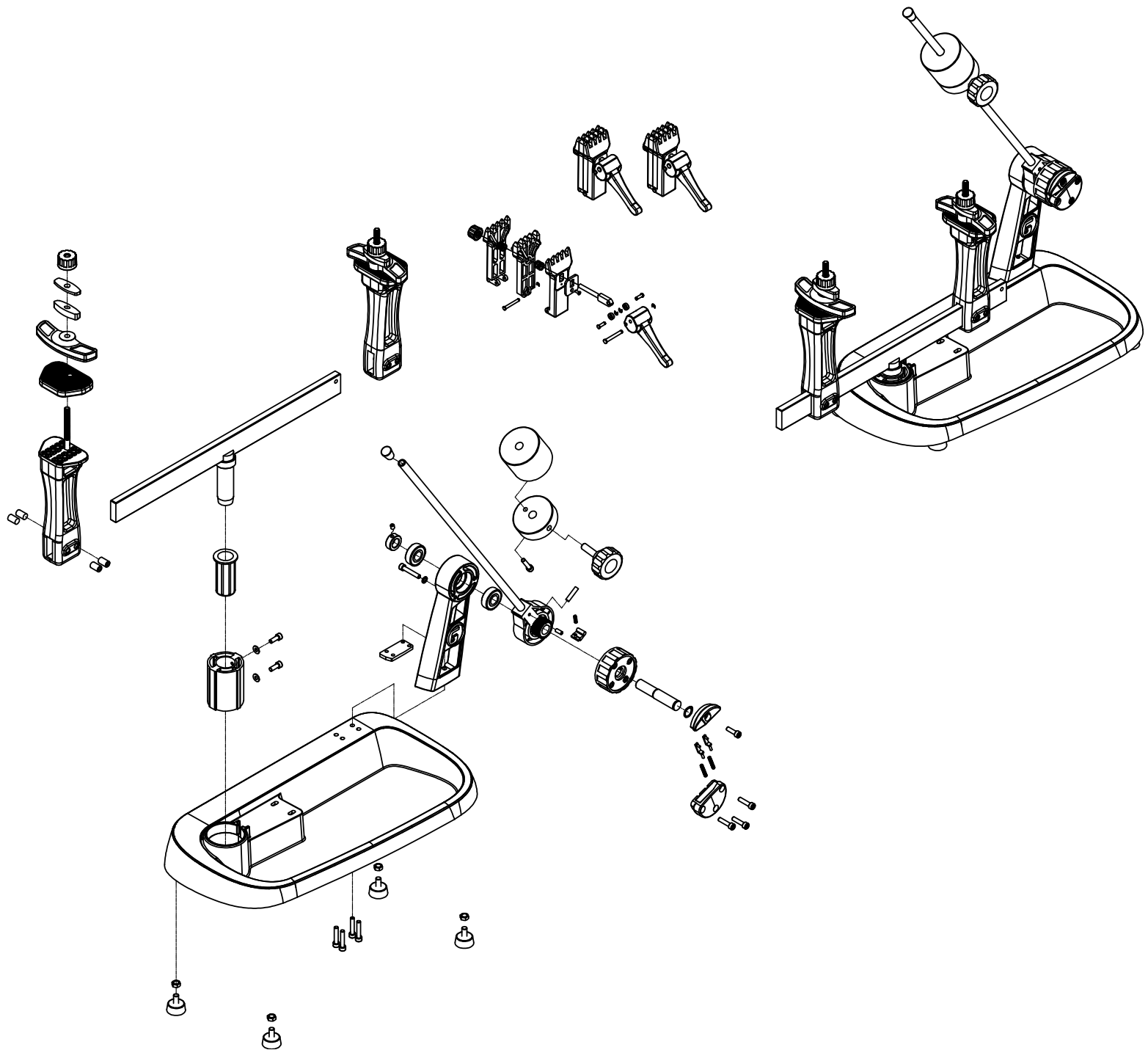
**Not Shown on following page (Parts Diagram)*

OPTIONAL TOOLS AND ACCESSORIES

PART NUMBER – TOOL DESCRIPTION

MBFC	BADM FLOATING CLAMP
MPMC	MACHINE COVER
MPG	STARTING CLAMP
MPS	CLEANING STONE
MMFSA	FLOOR STAND ADAPTER PLATE

PARTS DIAGRAM



GAMMA[®]

STRINGING MACHINE

MOMENTUM DROP WEIGHT 2



Engineered by
GAMMA[®]
Pittsburgh, PA USA
www.gammasports.com
Phone: 800.333.0337

Momentum Drop Weight 2 Stringing Machine
Made in Taiwan
MOM210